

- 1
- 2
- 3
- 4
- 5
- 6
- 7
- 8
- 9
- 10
- 11
- 12
- 13
- 14
- 15
- 16
- 17
- 18

MATERIAL

Aluminium, matte finish.
AISI 304 stainless steel screws and nuts.

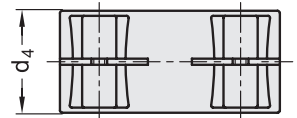
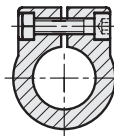
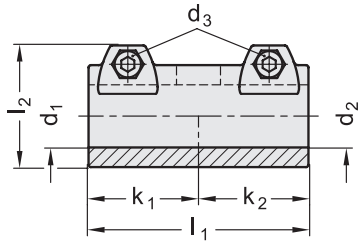
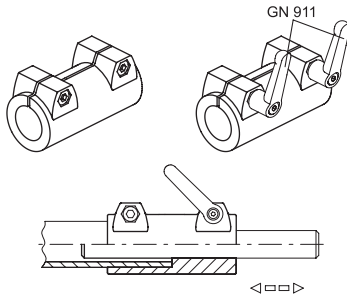
STANDARD EXECUTIONS

Surface finish index:
- **BL**: natural colour.
- **SW**: epoxy resin coating resistant to UV rays, RAL 9005 black colour.

FEATURES AND APPLICATIONS

GN 242 sleeve supports allow an excellent match with tubes GN 990 (see page 1368). They are particularly suitable also for connecting two tubes.

The clamping screws d3 may be replaced by clamping kit GN 911 (see page 1372).



Conversion Table
1 mm = 0.039 inch

d1	
mm	inch
20	0.78
25	0.98
30	1.17
40	1.56
42	1.64
45	1.76
48	1.87
50	1.95

METRIC

Code	Description	d1	d2	d3	d4	k1	k2	l1	l2	d3 Clamping kit	⚖️
GN.56611	GN 242-B20-B20-2-BL	B 20	20	M8	40	45	45	90	52	GN 911-M8-32	290
GN.56612	GN 242-B20-B25-2-BL	B 20	25	M8	40	45	45	90	52	GN 911-M8-32	290
GN.56631	GN 242-B25-B25-2-BL	B 25	25	M8	40	45	45	90	52	GN 911-M8-32	242
GN.56632	GN 242-B25-B30-2-BL	B 25	30	M8	40	45	45	90	52	GN 911-M8-32	214
GN.56651	GN 242-B30-B30-2-BL	B 30	30	M8	40	45	45	90	52	GN 911-M8-32	202
GN.56671	GN 242-B40-B40-2-BL	B 40	40	M10	65	70	70	140	77.5	GN 911-M10-50	960
GN.56673	GN 242-B40-B50-2-BL	B 40	50	M10	65	70	70	140	77.5	GN 911-M10-50	834
GN.56691	GN 242-B42-B42-2-BL	B 42	42	M10	65	70	70	140	77.5	GN 911-M10-50	802
GN.56711	GN 242-B45-B45-2-BL	B 45	45	M10	65	70	70	140	77.5	GN 911-M10-50	760
GN.56731	GN 242-B48-B48-2-BL	B 48	48	M10	65	70	70	140	77.5	GN 911-M10-50	700
GN.56751	GN 242-B50-B50-2-BL	B 50	50	M10	65	70	70	140	77.5	GN 911-M10-50	680
GN.56616	GN 242-B20-B20-2-SW	B 20	20	M8	40	45	45	90	52	GN 911-M8-32	290
GN.56617	GN 242-B20-B25-2-SW	B 20	25	M8	40	45	45	90	52	GN 911-M8-32	290
GN.56636	GN 242-B25-B25-2-SW	B 25	25	M8	40	45	45	90	52	GN 911-M8-32	242
GN.56637	GN 242-B25-B30-2-SW	B 25	30	M8	40	45	45	90	52	GN 911-M8-32	214
GN.56656	GN 242-B30-B30-2-SW	B 30	30	M8	40	45	45	90	52	GN 911-M8-32	202
GN.56676	GN 242-B40-B40-2-SW	B 40	40	M10	65	70	70	140	77.5	GN 911-M10-50	960
GN.56678	GN 242-B40-B50-2-SW	B 40	50	M10	65	70	70	140	77.5	GN 911-M10-50	834
GN.56696	GN 242-B42-B42-2-SW	B 42	42	M10	65	70	70	140	77.5	GN 911-M10-50	802
GN.56716	GN 242-B45-B45-2-SW	B 45	45	M10	65	70	70	140	77.5	GN 911-M10-50	760
GN.56736	GN 242-B48-B48-2-SW	B 48	48	M10	65	70	70	140	77.5	GN 911-M10-50	700
GN.56756	GN 242-B50-B50-2-SW	B 50	50	M10	65	70	70	140	77.5	GN 911-M10-50	680

Connecting clamps

* Complete the description of the standard item needed by adding the finish of the connector clamps: BL (blank) or SW (black).